



# National Industrial Co

New No 28, Old No 16 Mooker Nalla Muthu Street,  
Parry's, Chennai - 600001

Phone: 044-25211028

Mobile: 9884308478

Email - [natindco@hotmail.com](mailto:natindco@hotmail.com)

Website: [www.natindco.web.officelive.com](http://www.natindco.web.officelive.com)



Insulation Materials  
Brochure

# Glass wool

---



# Fiber Glass Wool Insulation

---

- Fiber Glass wool insulation Rolls and Slabs with or without Aluminum Foil, ceiling tiles, under deck board for thermal and acoustic insulation.
- **Types of facings:** Aluminum Foil, Black Glass Tissue, Glass Cloth.
- **Product Range:** Density 12 Kg/Cubic m to 100 Kg/Cubic m and thickness 12mm to 100mm
- **Temperature Range:** Glass wool is suitable for applications ranging from minus 195 degree Celsius to plus 230 degree Celsius. For special applications up to 450 degree. Aluminum foil facing is suitable up to 120 degree Celsius.
- **Chemical Stability:** Glass wool is chemically inert. Application does not cause or accelerate corrosion. Glass wool is rot proof and odorless.
- **Fire Safety:** Glass wool is non-combustible in accordance with BS 476 incombustible, extremely low spread of flame, non emission of dense smoke and toxic gases, on depletion of oxygen (high oxygen index 70%).
- **Biological:** Glass wool is inorganic. Does not encourage growth of fungi and vermin.
- **Dimensional:** Glass wool is stable under varying conditions of temperature and humidity when applied correctly. Excellent tear strength and not prone to sagging or settling. Rigid slabs have inherently high compression resistance.
- **Vibration and Jolting Resistance:** Conforms to BS 2972.
- **Moisture Content:** Less than 2% in accordance with BS 2972.
- **Water Absorption:** Less than 2% in accordance with BS 2972.
- **Shot Content:** Nil in accordance with BS 2972.
- **Odorless:** Conforms to BS 2972.
- **No Mould Growth:** Conforms to BS 2972.
- **Recovery after Compression:** More than 95% in accordance BS 3958

# Rockwool

---



Product Details	Density	MaxTemp	Dimension
<b>LRB Mattresses</b> 25mm – 100mm (Thickness) Wire Netting-standard GI wire netting Application : Ducts, boilers, tanks, buildings.	100,120,150kg/cum	750°c	1640mm (L) x 1220mm(W)
<b>Resin Bonded Slabs</b> 25mm-100mm(Thickness) Al. foil. Application Hot air ovens, Chimney heavy vessels, tanks, auditoriums. Ceiling, wall insulation.	48,64,96,144	750°c	500mm(W) x 1000mm(L)
<b>Loose Mineral Wool</b> Application: Oxygen Plants, cold storages, Turbines Roof Insulation, Railway break shoes, Ships.		750°c	40kg/bag.

# Lightly Resin Bonded Mattress

---

Rockwool Lightly Resin Bounded (LRB) Mattresses are made from fine fibers of Rockwool. LRB Mattresses are flexible in nature and comes with one side or both sides GI or SS hexagonal wire netting. LRB Mattresses are exceptionally suitable for wrapping large curve surface or cutting to fit over irregular surfaces like Boilers, Equipments, E.S.P, Ducts, Ovens, Furnaces, Tanks, Pipe Lines, Chimney walls etc.

## TECHNICAL PROPERTIES

**Maximum Temperature** : - 50°C to 750°C

**Thermal Conductivity** : Rockwool Mattresses have extremely low k values for wide range of temperatures. Thermal conductivity varies with the temperature and density of insulation.

**Compression Resistant** : Rockwool Mattresses offer good resilience to compression and regains their nominal thickness after removal of normal compressive load.

**Moisture Resistant** : Rockwool Mattresses are good resistant to water vapors, most common salts and chemicals. When tested as per IS, BS and ASTM standards the material exhibits excellent resistance to moisture absorption.

**Corrosion Resistance:** Rockwool Mattresses do not cause, Initiate or promote any kind of corrosion.

**Flexibility:** Rockwool Mattresses are very flexible. They will essentially retain thickness while conforming to any irregular shapes. Retention of fibers by the wire mesh prevents cracking or breaking of mattresses.

**Fire Resistant:** Incombustible when tested as Per IS: 3144. Melting point of fibres is above 1000°C or 1825°C.

## **Product Specification: IS 8183:1993, ASTM C 592**

Size of mattress : 1640mm x 1220mm

Thickness : 25mm to 100mm

Density : 100 & 120 Kg. /Cu.M.

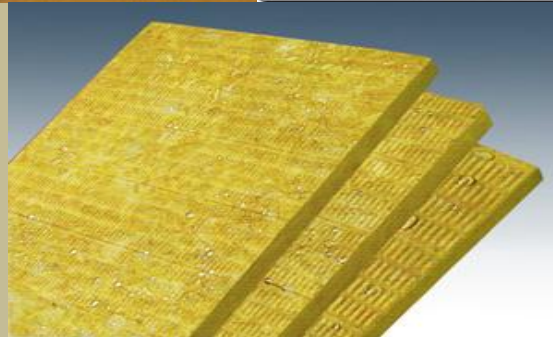
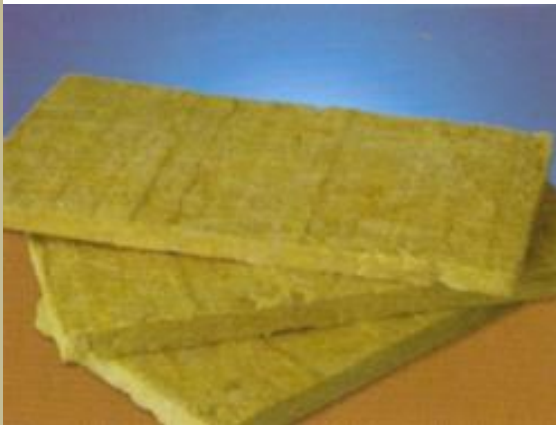
Metal Facing : G.I. Hexagonal wire netting of size 3/4" x 24G.

Standard Packing : HDPE covers.



# Rockwool Slabs

---



# Rockwool Slabs

---

Rockwool slabs consist of long fine fibers spun from molten natural rock and bonded with a thermosetting resin. Rockwool slabs have the best combination of Thermal Insulation, Sound attenuation and fire protection properties.

## Applications

Rockwool slabs are used for both hot and cold Insulation to conserve energy. Lower density materials are used for building application like underdeck Insulation, wall Insulation and sound proofing of partitions and over false-ceilings, airconditioning duct Insulation & chimney Insulation. Higher density materials are used for high temperature applications like furnaces, ovens, autoclaves, kilns, etc.

**Size of Slabs:** 1000 mm X 500 mm

**Thickness:** 25, 40, 50, 65, 75, 100 mm

**Density (Kg/Cu.m):** 48, 64, 96, 144

**Compression resistance :** Rockwool slabs are highly resilient and easily regain their nominal thickness after the removal of normal compressive load.

**Moisture Resistance :** Rockwool slabs are moisture resistant. Should the slabs become wet, full thermal efficiency will be restored after drying out the moisture.

**Corrosion Resistance :** Rockwool slabs will not cause, initiate or promote corrosion.

**Fire Resistance:** Rockwool slabs are incombustible and resist the spread of flame. They can withstand fire exposure temperatures and hence can be used for fire proofing.

**Maximum Service Temperature :** 750 Deg/Cel

**Sound Absorption :** Rockwool slabs provide excellent acoustical absorption and noise reduction co-efficient. Due to high noise reduction co-efficient, they are used in acoustic Insulation work for auditoria, theatres, public places and industrial areas where noise reduction is required.

# Ceramic Wool

---



## Ceramic Wool

---

The Ceramic Blanket is made up of long cerachem fibers of alumina and silica constituents and zircon

**Application:** Crude Oil, Reformer & Pyrolysis heating linings, High temperature pipe ducts & turbine Insulation, Treatment Furnaces, Ovens & Stack linings.

**Density** Kg / m<sup>3</sup> : 64, 96, 128

**Thickness:** 25mm & 50mm

**Colour:** White

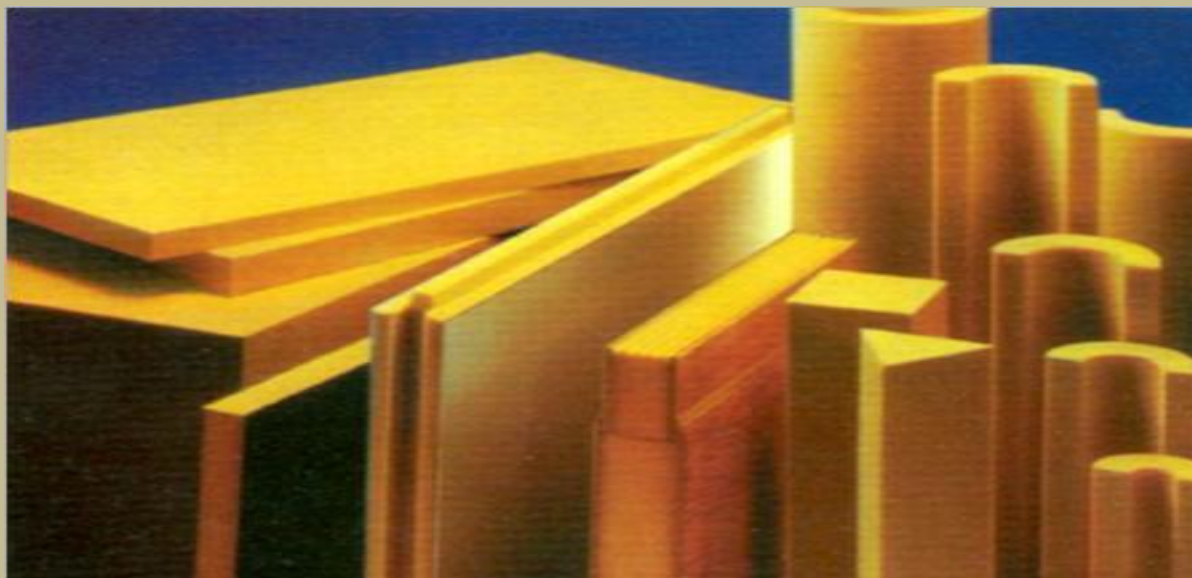
**Size:** 610mm (W) x 7620mm (L)

**Temp. Range:** 1000C to 1425C



# PUF Insulation Slabs

---



PUF Insulation is used extensively in applications of lower temperatures. We offer a wide range of PUF Insulation Slabs, Pipe Sections and Pipe Support with and without lamination.

The Insulation can also be done by machine, providing cavity of the required thickness and dispensing the PU Chemicals in defined proportion through dispensing machine where the isothermal reaction takes place and foam is formed.

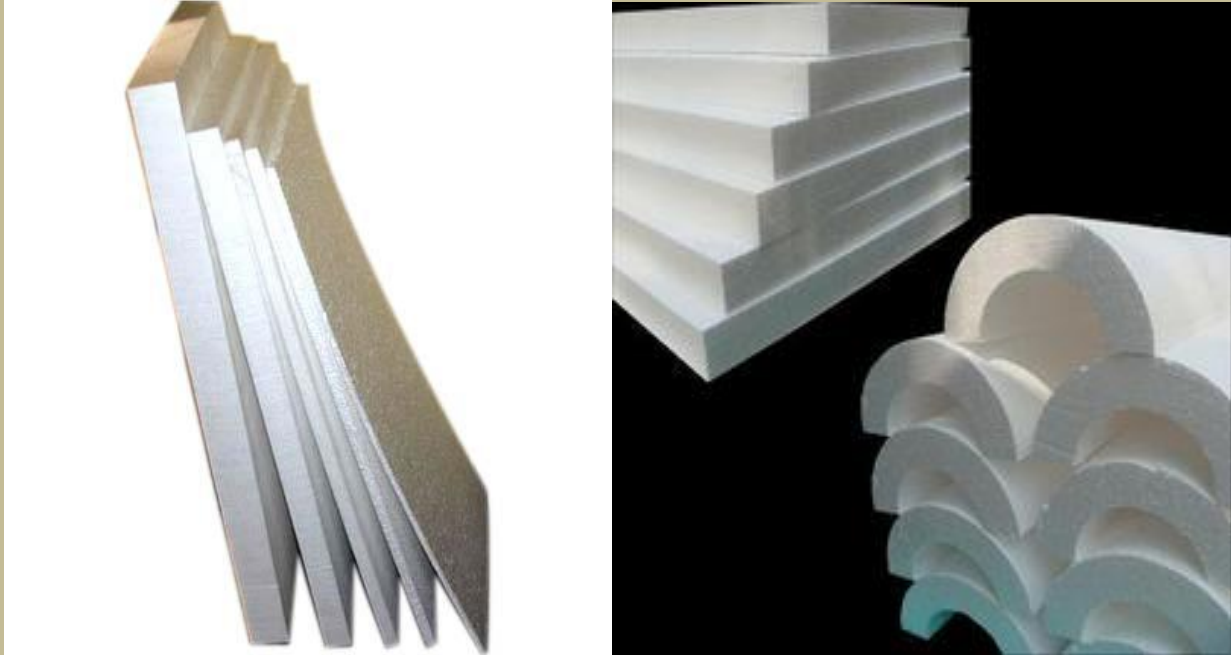
**Application** : Under – deck roof insulation, construction and insulation of pre-fabricated modular rooms for refrigerated Ware-housing, cold storage, Architectural paneling, pretition for offices, computer rooms , false- ceilings etc.

**Temperature Range**: -110 to 150 Degree Celsius

	Density	Thickness	Length	Width	Bundle
<b>Sq Mtr</b>					
<b>PUF SLAB</b>	36	50	1	0.5	10
	36	75	1	0.5	7.5
	36	100	1	0.5	5

# Thermocole

---

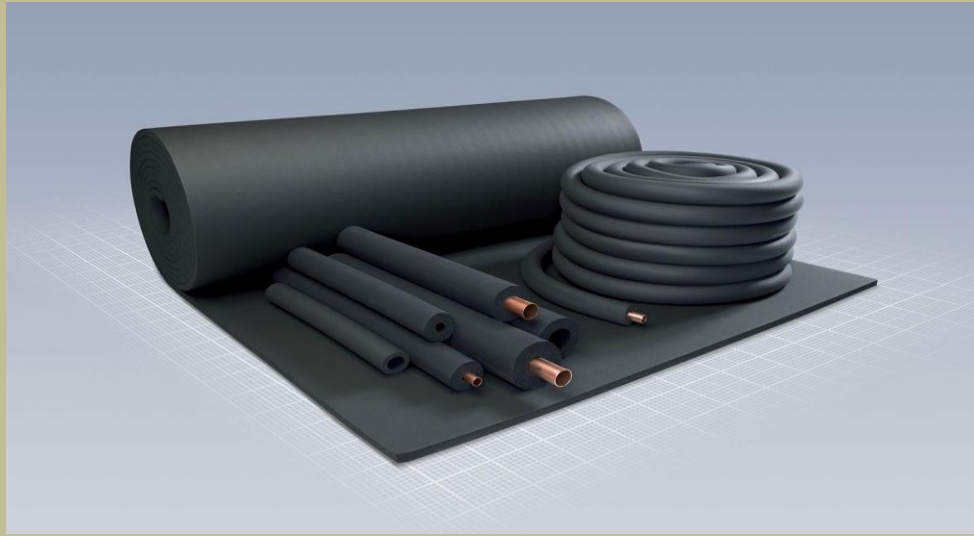


Thermocole is available in the form of “ND” & “TF” quality.

**Application** : Effective and efficient insulation for low temperature appliances i.e. cold storage, Industrial Refrigeration, Refrigerated vans, sound Insulation, Commercial & Household air Conditioning.

<b>Product</b>	<b>Density Kg / m3</b>	<b>Thickness (mm)</b>	<b>Temp.Range</b>
Slabs	14-24	12-200	-20C to +80C
Pipe Section	14-24	12-200	-20C to +80C

# A-Flex Nitrile Rubber



A-flex is India's first EPDM profile's manufacturer again a first Indian company to manufacture Nitrile Rubber Insulation Tubes and Sheets, in its state of the art Plant with European Technology.

<b><u>Density</u></b>	60 kg/M3 + 10%	
<b><u>Resistance to Oil &amp; Grease</u></b>	Good	
<b><u>Temperature Range</u></b>	-200 to + 115oC	
<b><u>Noise Reduction</u></b>	upto 35dB (A) upto 35dB (A)	
<b><u>Noise Absorption</u></b>	ISO 11654 Class D	
<b><u>Water Absorption</u></b>	After 28 days-max 0.9%	After 28 days-max 0.9%
	Corrosion Risk	pH7 (neutral)
<b><u>Reaction to Fire</u></b>	BS 476 Part 7	Class1 BS 476 Part 6 Class 0
	Euro Class, EN 13501	Classes B

**Ecological Data** pH7 (neutral)

No asbestos

No HCFC-CFC Resistance to Building Material Very Good

No formaldehyde-Cd-Hg etc.

**Applications:**

HVAC Insulations, Marine Insulations, Buildings, Cold Storage, Pharma Industries, Hot & Cold long Size : 1/ 4"-4.1/4" in length of 1.83 mtr Insulation  
Thk :3mm , 6mm , 9 mm, 13 mm, 19mm & 25mm

**Advantages: Sheets**

- 1)Closed cell structure Light weight & flexible
- 2)High water vapour diffusion resistance factor
- 3)Guarantees thermal & fire safety, Easily Cleaned
- 4)Without deterioration Fibre Free Low Thermal
- 5)Conductivity value CFC free and ozone friendly.

# AccoFlex Armacell Sheet

---



Accoflex is an elastomeric nitrile rubber foamed insulation that is produced in pre-formed sheet. It does not contain CFC or HCFC gasses and has an ozone depletion potential of zero. Accoflex is a closed cell insulation which means that many thousands of tiny air bubbles are encapsulated within the material, each one complete and separate from the next one. These small cells of stationary air act like a vacuum by preventing convection currents. This means that the closed cells within the material produce a lightweight and flexible insulation with low thermal conductivity a major benefit of Accoflex insulation.

Accouflex - Armacell - Sheet Class - C

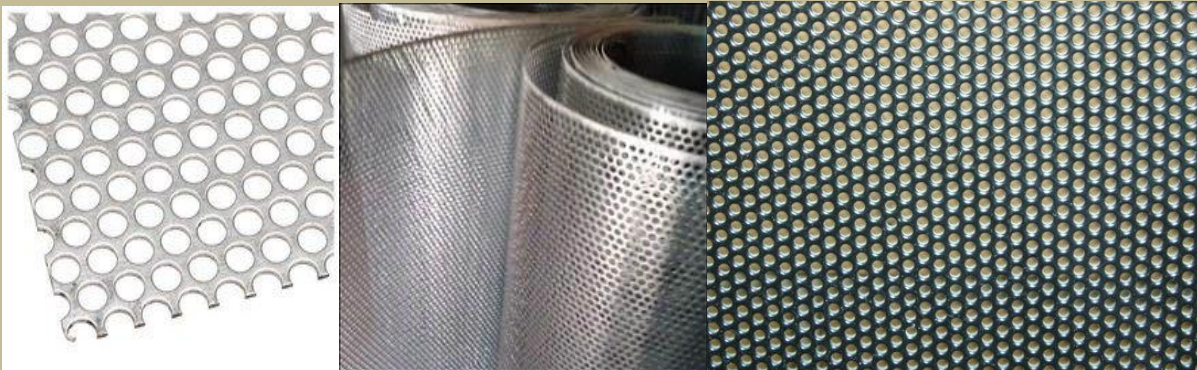
6mm

10mm

13mm

# Aluminium Perforated Sheet

---



Aluminium Perforated Sheet comes in two gauges 28G and 26 G.

# Adhesive Tapes

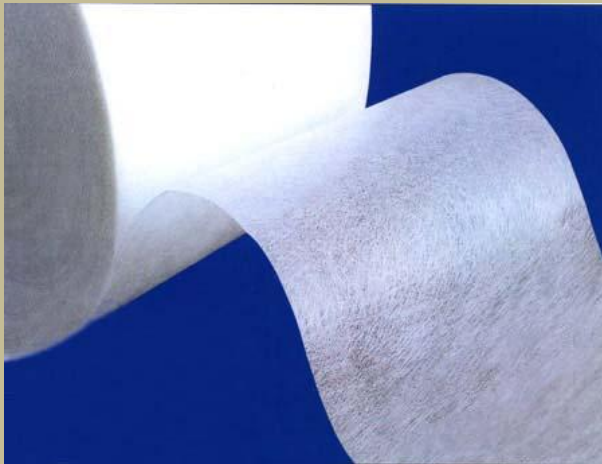
---



Adhesive Tape 2" 45Mt  
PVC Tape - Black 2" 25Mt  
PVC Tape - Brown 2" 25Mt  
PVC Tape - Colour 2" 25Mt

# Fiber Glass Tissue and Aluminium Foil

---



Fiber Glass Tissue  
White & Black  
50 Gsm (1mtr x 300mtr Roll)



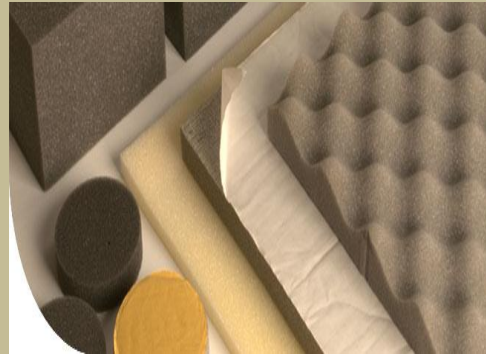
Aluminium Foil



## Other Products



Woolen Felt



Foam Products



Non Woven



Polishing Component



Pvc Curtains to retain Cool air in cold storage

## Contact Us

# National Industrial Co

New No 28, Old No 16 Mooker Nalla Muthu Street,  
Parry's, Chennai – 600001

Phone: 044-25211028

Mobile: 9884308478

Email – [natindco@hotmail.com](mailto:natindco@hotmail.com)

Website: [www.natindco.web.officelive.com](http://www.natindco.web.officelive.com)

